

# Moonlight Leaves

44" X 55"

## Supplies:

Sewing Machine

Rotary Equipment – Make sure you have a sharp blade in your rotary cutter!  
If you have a 28mm cutter, bring that. You can also cut them with a 45mm.

General Sewing Supplies

Cut A Round Ruler (I will have these in class for you to use if you don't have one)

Quarter Inch Foot

Open Toe Appliqué Foot

Thread for Blanket Stitch Appliqué of the Leaves

2 yds fusible web

Pencil

Appliqué Pressing Sheet or Parchment Paper

Optional – tweezers for hanging onto fabrics as we sew circles

Pattern fee - \$8.00

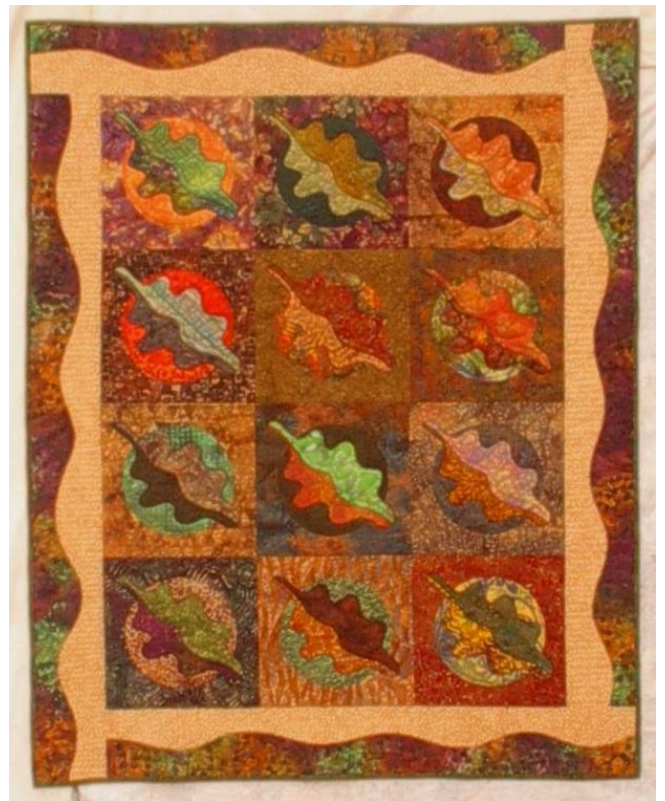
Fabric – I used batiks for my quilt but you may choose other fabrics if you like.

12 – 13 ½" squares for backgrounds. I used 12 different fabrics but they could all be from the same fabric or several different fabrics.

12 – 10" squares for the circles behind the leaves.

8 - ⅛ yards cuts for leaves or scraps at least 4 ½" X 12" (24 total.)

Borders – ⅔ yards of two contrasting fabrics.



If you have any questions email me at [quilted@ruggedwest.com](mailto:quilted@ruggedwest.com)  
[www.augustwindquiltedesigns.com](http://www.augustwindquiltedesigns.com)