

Strip Therapy ~ Mood Swing

Brenda Henning

brenda@bearpawproductions.com

www.bearpawproductions.com

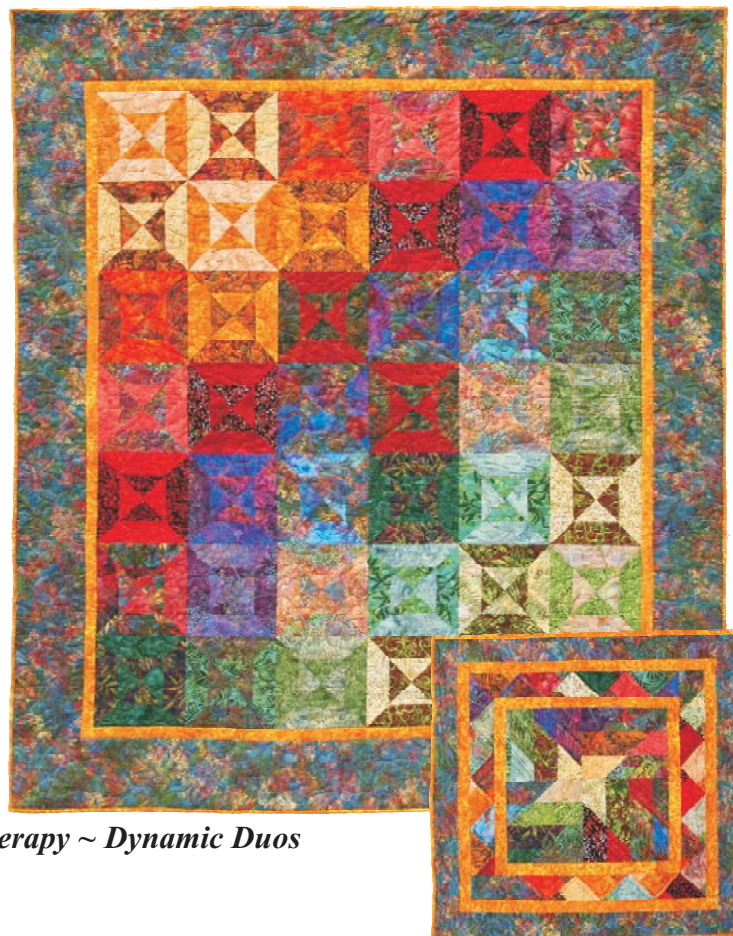
Mood Swing Finished Size: 62" x 70"
42 - 8" blocks

Fabric Requirements and Cutting Instructions:

Bali Pop - Strawberry Fields 1 roll of 40 - 2 1/2" strips

First Border (C255/47-Gold) 1 1/4 yards
1 strip 2 1/2" x wof - block construction
First Border - 6 strips 1 1/2" x wof
Binding

Final Border (E245/346 Huckleberry) 2 yards
1 strip 2 1/2" x wof - block construction
4 strips 6 1/2" x 64" lengthwise cut



Supply List

Pattern: Provided by Brenda - from Book *Strip Therapy ~ Dynamic Duos*

Sewing Machine
Thread to blend with fabrics - grey works well
Rotary Cutter Cutting Mat (18" x 24")
Ruler (12" or 14" is sufficient) Finger Presser
Seam Ripper Pins
Scissors
Omnigrd 98L - helpful but optional - or template plastic

Classroom Store

I will have available for purchase in the classroom a few of the supplies necessary for class: Omnigrd 98 rulers, finger pressers and a few basic notions. Some of these items may be difficult to find at your local shops because their use may not have "caught-on" in all locales.

Fabric Note The Strawberry Bali Pop is the set used in construction of the sample quilt. Please feel free to use any of the Bali Pops that you prefer. If you need help finding a packet of fabric, please contact www.BatikPlus.com. They are a terrific source when hunting batik fabrics. If you prefer, you may cut 42 strips 2 1/2" wide x width of fabric from your stash.

If you have any questions before class, please feel free to email me: brenda@bearpawproductions.com

