

118DA: One Block Wonders using Hexagons

Maxine Rosenthal

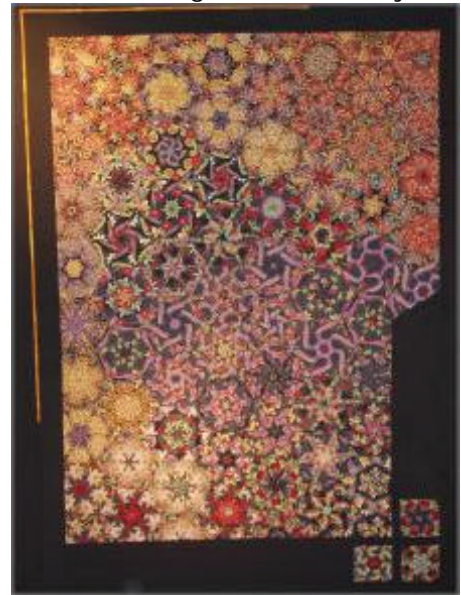
www.timelessthreads.net

Hexagons are a shape from nature. We all know that bee hives are hexagons, but ice crystals and snake skins are hexagons too. It is nature's way of repeating a single shape.

By using one fabric, the quilt will have more intensity and movement than the original fabric. We will be separating the fabric into its individual colors and then we will 'paint' with those colors to form a watercolor.

This is a very forgiving process. Mistakes are not easily seen. So, relax, cut, sew and design.

A 24" repeat will yield a good sized lap quilt and depending on the borders, can easily stretch to be bed sized. A 24 inch repeat translates to exactly 4 yards of fabric, though I suggest you buy a little more so that you can have the original fabric on the back of the quilt. That is all that is needed to begin your designing experience.



Supply list for the class:

- 6 repeats of a fabric, and maybe a little more to add to the border or the back. It is fun to see a slice of the original fabric along with the quilt. **DO NOT PRE-WASH THE FABRIC!!!!**

***** Fabric Considerations *****

Your quilt will be more interesting if:

- YOU like the colors.
 - There is a minimal background in the fabric. Too much background produces kaleidoscopes with no design and all background.
 - There is movement – flowers, animals, amorphous shapes. A flowing leaf will produce a more interesting kaleidoscope than a bare stick.
 - Avoid straight lines as in buildings or stripes. They are not as dynamic and they require much more precision when sewing.
 - Skip fabrics with an obvious repeat every few inches, to avoid repeats of exactly the same kaleidoscope. You want as much variety as possible.
 - I like large floral or animal prints. It is interesting to see a kaleidoscope formed of fish tails or lion's noses or the tires of a car or even a cowboy's hand waving as he rides the bucking bronco.
 - It might be helpful, when shopping, to use 2 mirrors arranged in a 'V' placed on the fabric to get a hint as to the kaleidoscopes it will form.
-
- Rotary Cutting tools – mat, rotary cutter, rulers – one long, one short, and one a 60 degree ruler – I recommend the Clearview Triangle.
 - Flower Pins. These pins lay flat; flat enough for a ruler to be over them and the ruler will still be flat against the fabric.
 - Design wall – piece of flannel or batting. Something that the fabric will stick to without being pinned and the kaleidoscopes can easily be moved around.
 - Sewing machine.
 - Basic sewing supplies.
 - Irons and ironing board.