

112DA: Stained Glass Calla Lily

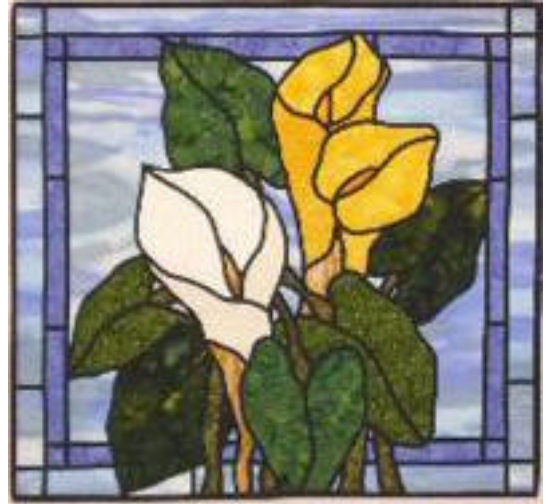
JoAn Knight

www.quiltsandthings.info

Finished Dimension: 23" x 24 ½"

Supply List:

- Pattern: Calla Lily by Bayou Patch Designs
- 15 yards fusible bias tape (black or color to compliment fabric)
- 2 spools thread to match bias tape
- bobbin thread to match backing fabric
- Size 4.0 twin needle
- Open toe foot
- Iron (small travel iron or Clover iron works well)
- Fabric Requirements:
 - ¾ yd fabric for background
 - Assorted scraps for flowers and buds
 - Assorted greens (lights, darks, mediums) for leaves
 - 5 x 21" strips for interior accent border
 - 1 yd backing fabric
 - 1 yd batting
 - Paper scissors
 - Fabric scissors
 - Ruler, at least 12" square, cutting mat, rotary cutter



*Pattern available through JoAn Knight at address or phone number above for \$12.00 plus shipping and can be ordered before class.

Kit available for \$45.00

Kit includes pattern, fabric, batting, backing and comes in a vinyl bag. Bias tape NOT included in kit.