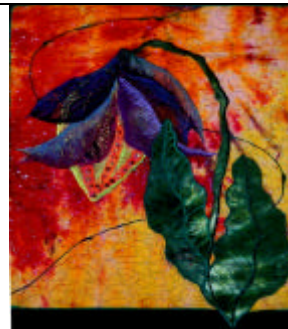


# 105DJ: Fantasy Flowers©

Ellen Anne Eddy

www.ellenanneeddy.com

You'll build fantastic flowers, and natural forms in this class. Cut-away appliqué allows you to do anatomically impossible appliqué vines, leaves and branches. Using the latest fusibles we can add brocades, lame's and organza sheers. Then we'll shade over our petals with free-motion embroidery and fabulous threads. Add a beetle, butterfly or dragonfly if you'd like. Real or imaginary, you'll love your flower garden.  
Skill level: Beginning to Expert 1 Session, 6 hours  
See contract for class prices



## Class Outline

A. 1. Discuss quilt design

2. Discuss difference between direct and cut-away appliqué

3. Prepare top

A. Add interfacing

B. Create under layer

1. Cut under layer shapes

2. Fuse under layer shapes

C. Create vines and leaves

1. Layer vine or leaf fabric for cutaway appliqué

2. Mark design

3. Stitch design

4. Trim away excess

D. Add flowers

B. 1. Decide on a shape

2. Fabric choices

3. Cut shapes

4. Build flowers

E. Encase edges and shade

1. Thread choices

a. Rayon, cotton, polyester

b. Monofilament nylon

c. Metallic threads

d. Thick threads

2. Demo appliqué bead techniques

3. Encase raw edges in appliqué bead

Demo adding decorative stitching over the overlay

## Materials :

- for 22"x18" Wall Hanging
- 1 fat-quarter yard fabric for top
- (hand-dye available)
- 1 fat quarter of fuse a shade
- ( heavy weight iron-on interfacing)
- 1-3 yards of Steam a Seam 2 12" wide
- several scraps of sheers, lames, lace, or organza fabric for overlay Decorative threads -Metallics, rayons, irridescents, both thick and thin.(each metallic or thicker thread should have a, #40, rayon thread to match)

## Tools:

- Zigzag sewing machine with appliqué foot, and darning foot
- Hard wood machine embroidery hoop 6" -9"(optional)
- Extra bobbin case (optional)
- #90 Jeans or topstitching needles
- Extra Bobbins (5-10)
- 1 pair, pelican (appliqué) scissors
- Marking pencils or chalk quilt-tack(you may use mine)
- Lo ran Needle threader
- Chenille needles (a large sharp hand sewing needle with a big eye)
- Rotary cutter and mat

I have fabrics, threads and stabilizers available for students in class. If you have any doubts about materials or tools, please call or mail me. I'll help make sure you have what you need.

Ellen Anne Eddy, 125 Franklin, Porter, IN 46304 219-9210885  
E-mail at [ellenanneeddy@gmail.com](mailto:ellenanneeddy@gmail.com) Web site at [www.ellenanneeddy.com](http://www.ellenanneeddy.com)  
Office Manager at [Threadmagik@gmail.com](mailto:Threadmagik@gmail.com) 405-735-3703

SEE PAGE TWO

## **Student Class Information**

### **Please read this before class.**

I know many of the things I use for creating my quilts are hard to find. I won't do kits for most classes because kits limit what I can bring you and limit your choices for your work. Instead I bring all kinds of resources into class for you so you can have what you need in class, without having to purchase something you don't want. Please bring anything you want to experiment with to class if you have them. But don't worry about finding things that you don't know where to get. I'll bring in the right stabilizers, fusibles, hand-dyed fabrics, the best threads, and tools I trust. They're there for you to choose so you can pick exactly what you need and want in class. You can make a tab and settle up at the end of your class time.

A big part of enjoying a class is being able to participate and experiment. If your machine isn't working right, it makes that harder. I will make every effort to help you if your machine is in trouble, but there are things you should do to help avoid problems.

Please bring a machine you are familiar with! If you are borrowing a machine, make sure you know how to thread the machine, wind a bobbin, and change the feet. Bring your manual if you can, and all your attachments.

In general, sewing machines are like cars. They need regular maintenance. Before any machine class, please take your machine out, check that it has the correct feet, and that it's working properly. If it hasn't been tuned up in the last two years, please have that done. Your good experience in any machine quilting class depends on your machine being in its best condition.

You probably know what you need to make your sewing day more comfortable. If you are more comfortable with a special light, chair or a pillow, bring it. Also if you have an extending table for your machine, that can be a great help.

I bring some books to help us feed our eyes and give us ideas, but if you have interesting art books, children's books with wonderful illustrations, or any kinds of image collections you want to bring, they will be very welcome. Please put your name in them before you come so they won't be misplaced.

As a personal favor, please don't wear perfumes or anything with strong scents. Or clothes that have perfume on them. I'm quite allergic to them. Other people may be too.

If you have questions or problems with your machine, or anything you are having trouble finding, feel free to call me and discuss it before class. I may be able to bring just the right gadget or book to make things work better for you.

Ellen Anne Eddy, 125 Franklin, Porter, IN 46304  
219-979-9105

E-mail at [ellenanneeddy@verizon.net](mailto:ellenanneeddy@verizon.net)

Web site at [www.ellenanneeddy.com](http://www.ellenanneeddy.com)

Office Manager at [Threadmagik@yahoo.com](mailto:Threadmagik@yahoo.com) 405-735-3703